

# Hawaiian Paradise Park Neighborhood Watch Meeting

The following officers present

- ☒ Judi Houle (President)
- ☐ Chris Gray (Vice President)
- ☒ Kathleen Shaw (Treasurer)
- ☒ Barbara Robertson, (Secretary)
- ☐ Officer DuWayne Waipa (Community Officer)

Call to Order  
at 9:00 am



Also in attendance:

Jayne Burbank, Gregg Datlof, Al Ercanbrack, Julie Ercanbrack, Tom Cioch, Linda Richards, Mary Cornish, Gerry Madie, John Seastrom, Robert Chang, K. Boyd, S Dubczak, R Adare, P Steffen, Bruce Derrick, Mike Stratton, K Shaw, Alisa & Bob Saunders, Sandra Kirkpatrick, Linda richards, Eva Reyes, Gary Anderson, Francis Blas,

- 1) Approval of May 4, 2019 Meeting Minutes
- 2) Crime Stats for April– Community Police Officer Waipa-Absent

a) May Crimes, Arrests, and Most Wanted

b) Unpermitted Junkyards- County of Hawaii Planning Dept. Zoning, Land Use, and SMA  
“Complaint Forms for Unpermitted Junkyards” if more than 2 unregistered vehicles  
or more than 200 sf junk. Office# 961-8288  
www.hiplanningdept.com  
email: planning@hawaiicounty.gov  
-State Dept. of Health Envir. Management Div., Solid & Hazardous Waste  
Office# 808-586-4226 www.health.hawaii.gov  
-Hawaii County Dept. of Health- Envir. Health Services- O# 974-6006
- 3) Block Watch Captain Team Leader- Gary Anderson

a) How to Observe and Report Suspicious Activity to Police - nonemergency# 935-3311

b) HPP Neighborhood Watch email: hppneighborhoodwatch@aol.com

c) Report Criminal and Dangerous Activity to 911

d) Report Drug Activity to Vice Hotline# 934-8423 or O# 961-2340

e) Report Unsafe Drivers/Speeders/Racing to HPD# 961-2226
- 4) Community Emergency Response Team Coordinator - Pat Steffen

a) CERT Meeting 6/20/19 Thursday at 6pm.

b) Hurricane Season Begins 6/1- Prepare Emergency Kit, Plan, and Be Informed
- b) Get Civil Defense Alerts:  
www.hawaiicounty.gov/active-alerts
- 5) Emergency Radio Team Leader - Gregg Datlof

a) New Repeater and final purchases.

b) Installed Roof Antenna for Radio & Participated in the LDS Emergency Preparedness Fair

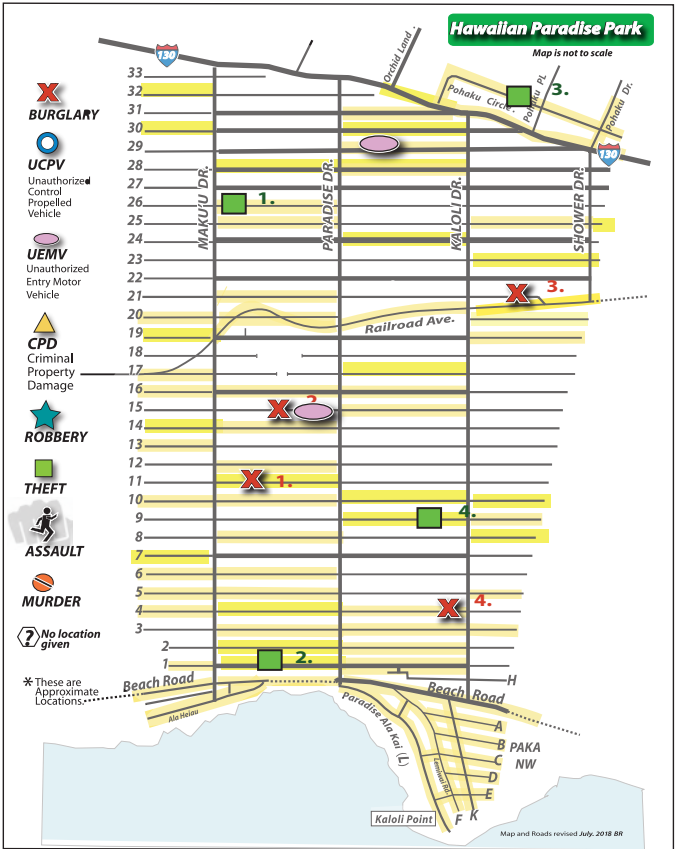
c) Hurricane Preparedness & HPP NW ERT Meeting 6/12/19 at 2pm
- 6) NW Vice President – Chris Gray-Absent
- 7) Treasurer’s April Report - Kathleen Shaw

a) Treasurer’s Report on March’s Income, Expenses, and Upcoming Purchases.
- 8) Dash Camera - Apeman 1440P & 1080P, Dual Cameras, Night Vision, Cost \$132  
Home Security Cameras- Simpli Safe and Ring
- 9) April Food Pantry Report-360 individuals were served. 123 children/160 adults/77 seniors  
Next Food Pantry 6/25/19 Tuesday at 1:30-3:00pm in the Activity Center  
\*\* Please Volunteer, donate clothes, produce, toiletries, or bring brown paper grocery bags.
- 10) Swap Meet – 6/8/19 Saturday 7-11am in the HPP Activity Center
- 11) Albizia Workshop- 6/15/19 Saturday 9am Activity Center .
- 12) Adjourn Meeting

Meeting Began

Call to order 9:am. Minutes from last month were passed out to anyone who didn’t see them on line. They were voted on and approved as per info. supplied at the time of the meeting. If new or corrected info come in later, we will change the archival copies.

## Crime Map for May 2019



### BURGLARY 4

1. 5/07/19, 7:21am, 15-19█ 11th Ave.\*
2. 5/25/19, 11:30am, 15-17█ 15th Ave.
3. 5/30/19, 8:37am, 15-14█ 21st Ave.
4. 5/30/19, 9:01am, 15-15█ 4th Ave.

### THEFT 4

1. 5/03/19, 10:26am, 15-20█ 26th Ave.
2. 5/04/19, 10:55am, 15-17█ 1st Ave.
3. 5/15/19, 7:12am, 16-13█ Pohaku Cir.
4. 5/24/19, 2:57pm, 15-16█ 9th Ave.

### UEMV 2

1. 5/25/19, 8:28am 15-16█ 29th Ave.
2. 5/15/19, 11:31am 15-17█ 15th Ave.

\*May 7th, 8th, 9th forced entry of home, (broken window) burglary, stolen items, attempted car theft. 11th Ave. Police called/responded numerous times on these dates. Police report made.

## May's 2019's Crime Stats

Read by Judi Houle

The Officer was not available, for our meeting so Judi Houle read and commented on the crimes from last month.

As always, we want everyone to sign up for **NIXLE ALERTS**. Go to Nixle.com and sign up for road closures, emergencies , current crimes, who the police on looking for and who they have arrested.

There have been some arrests that we've been watching for. A father and son team of criminals who live in Ainaloa on Coconut Dr. have been arrested on Drugs and Guns.

Thanks to our NW Group on 6th Ave for reporting the trash and vehicle dumped. Photos and video have been given to the police. We are working on the issue on 18th of an illegally run so-called business that has numerous un-permitted buildings and many junk cars. The police are already involved. Forms from the county were shared to report eyesores and environmental issues from unpermitted Junkyards. *(Note, the info is on the agenda under #2, b).* There can be no more than 2 unregistered vehicles or no more than 200 square feet of junk.

Judi reported on her purchase of a Dash Cam system . She explained the benefits, operation, and cost for this system for the purpose of purchasing an additional unit for our Observation Team Leader. After a lengthy explanation and demonstration it was put up of a vote and voted in favor of a purchase of one unit for \$132.00 when funds are available. Judi shared the photos from this cam with the group. This system has a front and rear camera, also works at night, and records audio, takes an SD card and many settings to pick your choice of how long it will record before over recording. *(Details are on the agenda #8.)*

The discussion next moved to the new security systems that many of our members have purchased for their own use. **Ring Doorbell & SimpliSafe** wireless systems which seems to be a valuable investment from the testimony of members. *(We do not indorse any one type of product, but we try to have an open discussion to aid in the purchase process of members.)*

Many systems will need a battery back up and recording device that will not be detected by thieves. The other problem is consistency with WIFI signals to support the remove features of the system to relay data to our cell phones. Many HPP residents live in areas with little or NO internet. Spectrum promises to be up and running in most new areas of the park sometime in the fall. Members are hopeful. The increase in Net speed opens many doors for security systems previously unavailable.

## Squatters' & Drug Houses Warnings

**We've resolved 16 homes with squatters and drug activity over the past 2 years by working closely with neighbors, NW, HPD, and Vice.**

Chair, If you suspect squatters: log their license plates, note vehicle types and colors, catalogue people comings and goings. Report to HPD, VICE, and Neighborhood Watch. It helps to report to all three. If we are all on the same page the better the chance good results will happen. Our CPO has repeatedly confirmed the best protocol for reporting squatters is to give the physical location and activities.

### SOME ADDITIONAL DISCUSSION on SQUATTERS

Residents share their own stories of having to deal with squatters and how it has impacted their lives and their neighbors. We talk story & share ideas at meetings of how to handle this epidemic and success stories with the best ways to PREVENT a squatter house from popping up in your neighborhood. NW members share ideas on dealing with this problem and what our government officials are doing and not doing to help us. The important thing is that we act together and prevent empty building from falling into a problem properties. There are always ideas shared at our meetings and solutions presented. The bottom line is it is much easier to prepare ahead of the problem by knowing all you can about the people and properties that surround you. Keep contact info on hand to alert the police and property owners of any changes ASAP. Talk to your neighbors because you/we are all in this together.

## Security Surveillance Updates & Messages



**We are currently out of loaner cameras.** However, you can put your name on a waiting list and we will let you know when one comes back in. We hope to have some come back soon. They are very easy to use and free for the loan to our HPP NW members.

**Mary Cornish volunteered to help manage the Camera Program. Thank you Mary.**

Our cameras are available at our meetings and we have more on order if someone is in need, please sign up. We have changed the loan time to 90 days now. If it is not needed by another resident on the wait list we do allow a borrower to keep the cameras longer. Please know that the longest out after 90 days will be first called back in.

We still have an **engraving tool** that we freely loan out to HPP residents. Residents can mark their valuables for proof of ownership. We suggest using your name, address, or phone number to help identify your items if or when recovered. Often stolen items will turn up during a police raid, at garage sales, on Craig's List, and/ or at Swap Meets. If it is marked with "Property of" and your name, it becomes very hard to pass it off at any random 2nd hand sale. Pawn shops will not want it and it makes it harder to sell. Honest people don't want to buy stolen items. Criminals just want to turn your hard earned goods into quick cash for any number of reasons including drug use.

**REMINDER:** Reminder for the group that crimes are often just executed because the opportunity is there. So please don't give thieves the chance. Secure your belongings. Cable lock your equipment up. This may slow thieves down. Get a security system with cameras, organize with your neighbors. Also reminded residents about common practices to help make your property and yourself safer by referring to the Helpful Hints hand out supplied by NW. Also signing up for NIXLE.COM alerts. He also shared his info about "Squatter Properties" and problem areas his sharing info and cameras with. These properties are a chronic source of crime and unrest to all the neighbors in the immediate area. In addition the crimes radiate outward from these locations effecting everyone in HPP.

So please keep reporting empty properties to us and the police when activities are seen.



## Pres. Judi Houle's Message

The final GIA paperwork was turned in along with the last receipts for radio equipment purchases.

- 1) Certificate of Vendor Compliance- updated 6/13/19
- 2) Certificate of Liability Insurance- resent- 7/30/18- 7/30/19
- 3) Form 300- Progress Report for Quarter 4
- 4) 2 Receipts of purchases made by Gregg Datlof \$1,835.00.
- 5) Form 310- Expenditure Report.

Dangerous criminals squatting in homes continues to be a problem where the owner has died or the bank doesn't take responsibility for evicting squatters. We are working closely with our Legislators to remedy this oversight to protect the neighbors and communities from harm.

Rep. Joy San Buenaventura has accomplished 4 Laws to address squatters: fine absent homeowners / banks, allow Dept. of Taxation to demolish or sell vacant and abandoned homes, and allow neighbors and HOA to evict squatters.



### NEIGHBORHOOD WATCH

*We look out for each other!*  
by **Gary Anderson**  
Block Watch Captain Leader  
g19n83@gmail.

### May's Blockwatch Captain's Report

Gary shared some helpful ideas on how to deal with crime in our neighborhood and ways to keep yourself, family and property safe. Organize with your neighbors, they are your best defense. They are your eyes and ears when you are not home. Remember to change up your habits by moving cars around and parking them in different spots in the yard. Leave different lights on at night. Keep reporting any suspicious activity to us and the police. Let us know as soon as you can if you have an issue or made a report to the police. We will step up our response. Remind them to call HPD when they see anything suspicious. Install cameras. They are very reasonable these days and easy to use.

Don't forget to Grab several copies of our very helpful, **"Ideas to Keep Your Property Safe"**. Share these print outs with your neighbors. Keep neighbors involved and invested.

**Please Keep calling that Non-Emergency 935-3311 for anything that doesn't look or feel right.**

Your safety is most important. If you want to take photos, be discreet and act like you are talking on your phone.

**REMEMBER: WE DON'T WANT YOU TO AGITATE SUSPECTED CRIMINALS & PUT YOURSELF AT RISK.**

## ERT EMERGENCY RADIO TEAM REPORT

by Gregg Datlof, Team Capt.



Gregg spoke about team members putting up an antenna for one of the members who was having an issue sending and receiving signal. We want to thank Al, Gary, & David.

The team purchased supplies of various small kinds of hardware for all our hand held and other communication equipment. "Chris Gray and I have been doing lots of testing and fine tuning the new equipment and been in contacting the manufacturer to iron out some bugs. Now we can deploy the new system and it should be running fine. We are ready as we can be with the latest equipment and now just need to sharpen our volunteers' skills".

### NOAA : National Oceanic & Atmospheric Administration

NOAA Weather Radio broadcasts National Weather Service warnings, watches, forecasts and other hazard information 24 hours a day. The radio program broadcasts on frequencies 162.400 (channel 1), 162.450 (channel 3), and 162.550 (channel 7) in the Hawaiian Islands. Weather radios can be purchased at local electronics stores, mail order catalogs and various other locations.

Station WWG27 serves parts of the Big Island, from transmitters located on the Big Island (South Point, 162.550 MHz; and Kulani Cone, 162.500 MHz).

For information in our radio team feel free to contact Greg at: 808-443-3713, or WH77FC@gmail.com.

I would encourage all prospective ERT applicants to consider getting their amateur radio license. If you are interested please Contact Doug Wilson: Phone: 808-985-7540

**NOTE:** With the latest emergencies affecting all of lower Puna and the Volcano affecting upper Puna the timing is just proof of the need for us citizens to be as organized as we can be. When whole areas of our community could become cut off with no electric, phone or cell coverage the more organized we are with a broader volunteer coverage area the better. We are still hearing that cell service is very spotty for those who live near the flow. They are very concerned that they will not get alerts needed to get out in time.

We often explain why we started the radio team and what our purpose is to some new residents. Sudden and Island-wide disaster such as an earthquake could cause island beltways to become impassable. Imagine how many areas of your life could be affected. In addition, all the obvious problems and now add no communication with the outside world. **Hurricane Season is June-November.** Hurricane activity and intensity increases during August and September. Earthquakes & volcanic activity doesn't have a season, they can occur anytime without notice.

**Please call the police  
non emergency phone#  
935-3311  
for anything suspicious  
Program it into your phone.**

**Observe, Record, & Report • Non Emergency Police # 935-3311**



## Community Emergency Response Teams C.E.R.T. Program

by Pat Steffen, Coordinator & Team Leader

by Pat Steffen, HPP CERT Lead

CERT members are trained to respond to disasters when professional first responders are overwhelmed or delayed in responding. CERT training is beneficial even if it is just something you want to learn for yourself and immediate family, but when you join the HPP CERT team, you play a valuable role in helping your community get through the aftermath of a disaster and back on its feet. For those who don't know, our team was front and center the full length of the lava emergency in lower Puna. With our CERT training and the wonderful dedication of our HPP CERT members, we were able to make a real difference for Puna residents impacted by the disaster.

Every month HPP CERT has a fundraising table at the Swap Meet for public outreach and to help raise funds for emergency equipment and supplies. HPP residents are welcome to stop by and chat with us about the CERT program and general disaster preparedness.

**Hurricane season began June 1 and experts are predicting that it may be a bad one.** It's time to develop or update your family emergency plan. Make sure it includes the needs of all family members, including children, kupunas and pets.

Hawaii is the most isolated populated island chain in the world. Hawaii County is #1 out of the 3,140 counties in the USA for the potential to be impacted by hazards. You need to be prepared. When disaster strikes our area, you will know what to do if you've had CERT training. HPP CERT meets the 3rd Thursday every month at 6 p.m. in the HPP Activity Center Library. The next Basic CERT Training Class will be in Keaau starting Sat, Sept. 28. For more information about the CERT class, you can email Pat Steffen at [pasteffen99@gmail.com](mailto:pasteffen99@gmail.com) or stop by the CERT table at the HPP Swap Meet.

### Get Civil Defense Alerts:

[www.hawaiicounty.gov/active-alerts](http://www.hawaiicounty.gov/active-alerts)

**Emergency Alert System Radio Stations: KHLO 850 AM, KKBG 97.9 FM, KPUA 670 AM, KWXX 94.7 FM**

### Emergency Preparedness Tips

Develop a Family Emergency Plan that includes every member of the family (and pets) and make sure each member of the family understands the plan. Exercise your plan - conduct an evacuation drill, check your first aid kit, rotate emergency food and water supplies. Figure on 1 gallon of water per person per day (2 qts. for drinking, 2 qts for cooking and sanitation). Do not wait until the last minute to buy supplies everybody will need such as batteries and water (stores may run out). Know where your family will meet if a disaster occurs. Have a "go" bag ready for each member of the family and pets that can sustain you for 3 days should you need to evacuate. Keep a list of items to add at the last minute (e.g. medications, reading glasses, etc.). Keep important documents in one place so you can grab them quickly. Include proof of home ownership, rental agreement, insurance, bank info, vehicle titles, pet microchip info and current photos of all family members. Have a list of emergency numbers near or entered in your phone. Make sure you have some emergency cash on hand. If there is no power, ATMs and charge card machines may not work. If you are staying in place, have at least 14 days of food, water, and disaster supplies on hand. Know how to safely turn off your gas, electricity, and water. **NOTE: Gas must be turned on by a qualified professional.**

### Reminder and Info for new residents

## EMERGENCY ACTION COMMITTEE

Hawaiian Paradise Park has an Emergency Response Plan that can be found on the [HPPOA.net](http://HPPOA.net) website. If a Disaster hits HPP our Activity Center will be turned into a Command Center to assist our residents to provide services and supplies. **Reminder:**

Our Team springs into action after a disaster. Several of our NW members are also volunteers on our EAC. It will allow us to act quickly to help those who may need it. If you wish to volunteer for this worthwhile program feel free to contact us through the NW email.

**HPPOA Office or/and come to an EAC meeting. EAC meetings are held the 2nd Wednesday of the month, 2:PM at the Hui Library.**

For amateur radio training contact: [DougWilson:douscelle@aol.com](mailto:DougWilson:douscelle@aol.com)

### GO BAG CHECK LIST:

Identification card or drivers license, Credit/debit card numbers, bank account numbers, Medical insurance cards, Advance healthcare directives, Copy of titles/deeds to property, Copy of prescriptions (medicine, hearing aids, glasses, etc). You can scan all these documents into a computer and EMAIL the doc to you own email acct. You will be able to access all your documents when the internet is back up.

Change of clothes and sturdy shoes, Portable battery or crank powered. Non-perishable foods, Water, Storage containers, Hygiene supplies, Comfort items, & whistle. Don't forget all the things you need for your pets.

## Neighborhood Watch Swap Meet

<b>Neighborhood Watch</b> Egg, Cheese, Ham <b>Croissant Sandwiches</b> Donation \$4.00 ea. Donation	Cafe is Open <b>SPAM Teri, Egg &amp; Rice</b> <b>Musubi</b> \$2.00 Donation
Fresh Made <b>Quiche</b> \$4.00 per slice DONATION	<b>CHILI BOWL</b> Bowl \$5.00 Donation
	<b>Today's Muffins</b> Fresh made from scratch... <b>JUMBO Pumpkin Cream Cheese</b> \$3 ea. Donation



**Held the 2nd Saturday of each month.  
7:am - 11:pm. All proceeds support your NW**



Our Swap Meet is the source of our financial support. **HPP NW Swap Meet** volunteers often donate supplies in addition to their time and talents. With the help of our vendors we sponsor **HPP Neighborhood Watch** projects that keep our neighborhood safe. These donations also allow us to sponsor and supply the **HPP FOOD PANTRY** that helps our Puna neighbors in need.



Treasurer's Report for May  
by Kathleen Shaw

May. 1st Opening Bal SAVINGS \$2177.23  
May. 1st Opening Bal Checking \$6883.10

May's Swap Meet INCOME:  
FOOD DONATIONS \$ + 591.00 #  
VENDOR DONATIONS (22 Tables) \$ + 220.00  
VENDOR DONATIONS (16 Spaces) + 80.00  
Extra ? What is EXTRA??? 18.00  
Cash Donations in box + 13.00  
Signs sold at cost + -0-  
Sub Total + \$ 922.00\*

May's Swap Meet EXPENSES:  
(Reimbursements for supplies)  
Barb R # \$ 43.95  
Shar S #651 \$ 44.66  
Bill E #652 \$158.58  
Judi H # \$ 34.33  
Julie E (cash) \$ 3.49  
(There maybe others, not submitted in time)  
Sub Total - \$ 285.01  
\$636.99\*

Not in Accounting, for reference only  
NOTE: Constant Float is Cash kept on hand for change in drawer \$130.00  
May's Swap Meet OperationalExpense :\$636.99  
Hui monthly rental 1/12 - \$ 20.00  
1/12 of insurance premium - \$155.00  
General Excise Tax on Mays food sales 4.25% - \$25.12 #EST.  
Proceeds realized from May's Swap Meet Sub T. \$200.12  
After Operating Expenses Total \$436.87 \*

Expenses:  
Transfer to Svng- \$ 200.00  
Judi H (reimburs) #648 - \$ 5142.12  
Chris G(reimburs) #649 - \$ 3624.53  
Gregg D(reimburs)#650 - \$ 72.99  
Sub Total - \$9039.64

DEPOSITS:  
Swap Meet funds + \$ 498.30

May's Closing Checking Bank Bal. \$ 8237.90\*\*

\*\*Actual bal. Including unchecked (outstanding) checks  
( Outstanding checks as of 5/27/19 \$3668.48 )

May's Closing Savings Bank Bal. \$ 2377.23

HPP Neighborhood Watch  
May's FOOD PANTRY REPORT

May's 1st Checking Balance \$377.94  
Expenses

May's Food Basket - Food (Ck#126) \$ 4.50  
Checking Balance end of May's 31st \$373.44



Judi Houle Reports About the Food Pantry.

The Food Pantry Report is as follows: The total number of people served at May's event was 374 total.

At our May's Food pantry we provided food for 138 children,171 adults, and 65 seniors. This was the most participants since we started 2 years ago.

We will be purchasing more food every month, but when we run out we have to close. Every month the need grows and we have to step up to meet these needs. Our next Food Pantry will be held on May.28th. We do except donations and we are a 501c3 non profit. Your donation is tax deductible and you will be helping you neighbors in need. Please see or email me for any question you may have about making a donation. NWHPJud@gmail.com.

Our next Food Pantry is Tuesday June 25, 2019

We will deliver 3-4 pallets of food to Activity Center around 11:30 am.  
Please join us 6/25/19 starting at 11:30am. 11:30-1pm 10-12 Volunteers are needed- Unload 3-4 pallets of food, inventory, and fill 120 bags + 30 bags  
1:30-3:30pm 10-12 Volunteers are needed- 4-5 Volunteers to register new recipients, check-in, and tickets. 6-7 Volunteers to hand out bags and help carry bags for the disabled.

\*\* Donations of brown paper grocery bags, clothes and toiletries are greatly appreciated!

Mahalo to all our volunteers

The need grows greater every month, so we need to purchase more supplies from the Hilo Food Basket and receive more donations from the public. Funds raised at our Swap Meet also supports the Food Pantry. If you want to volunteer, please contact : Judi Houle, nwhppjudi@gmail.com

If you are blessed with an abundance of fruits from your garden & would like to help with a great cause, please bring your wash fruit to our Food Pantry on the morning of the Food Pantry event. Many families would be very grateful to have your gifts.

amazon smile  
Amazon donates 0.5% of the price of your eligible AmazonSmiles purchase organization of your choice.  
(That would be HPP Neighborhood Watch)  
Amazon Smile is the same Amazon Support your charitable organization by starting your shopping  
We would like to thank the person who signed us up for this program, donations are coming in. Mahalo

The move over law is a law which requires motorists to slow down, move over , or change lanes if possible to give safe clearance to law enforcement officers, firefighters, & ambulances.

# helpful phone numbers

**For Emergencies Call: 911**  
**Police, non emergency 24/7: 935-3311**

Pahoa Police Station: 965-2716  
Crime Stoppers : 961-8300 VICE/Drug Tipline : 934-8423  
HPD Traffic Services to Report Speeders- 961-2305

**Mayor’s Office: Harry Kim: 808-961-8211**

**Representative Joy A. San Buenaventura**  
House District 4 Hawaii State Capitol  
808-586-6530  
Joy’s email: [repsanbuenaventura@Capitol.hawaii.gov](mailto:repsanbuenaventura@Capitol.hawaii.gov)  
<https://www.capitol.hawaii.gov/memberpage.aspx?member=Sanbuenaventura>

**Senator Russell Ruderman**  
State Capitol District 2  
808-586-6890

**Ashley Kierkiewicz**  
District 4, Hawaii County Council Member  
808-965-2712

**Mitch Roth**, County Prosecutor: (808) 961-0466  
**Child and Family Services: 935-2188**  
**Domestic Abuse Hotline: 959-8864 (24/7)**

**Puna Community Police Officers: 965-2716**  
**Officer Eddie Cardines - Pahoa to Kalapana**  
**Officer Earl Haskell - Kurtistown to Volcano**  
**Officer DuWayne Waipa - HPP, Orchidland, Ainaloa, Keaau**  
**Officer Jeremy Kubojiri**

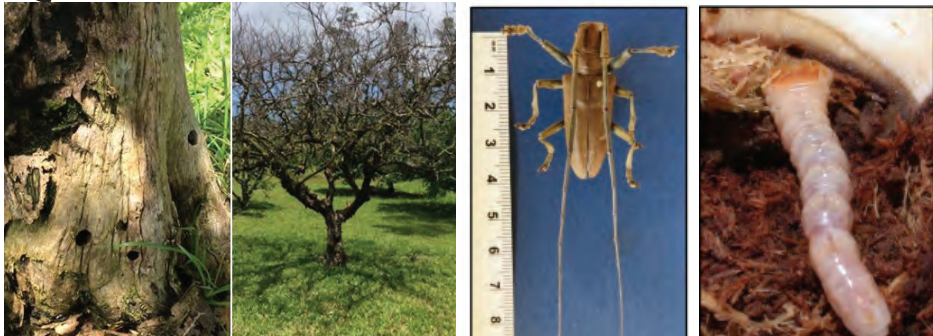
Air Pollution: 933-0404 HELCO (Electric Co): 969-666  
Civil Defense: Bill Hanson 935-0031 Humane Society: 966-54586  
County Bus Service: 961-8774 Hawaiian Telcom: 933-6411  
Fire Dept. Non Emergency: 961-8336

**Board of Health: 947-6025 for Dengue Fever: 974-6001**  
**Contact info for Big Island Ivasive Species Committee.**  
**Office: 933-3340 • HOT LINE: 961-3299**

**HPP Office: 966-4500** Admin Assoc:  
Donna Caceres, Bridget Haley  
General Mgr: Don Morris

**HPP Residents’ Food Pantry**  
**Every 4th Tuesday of the month**  
**Hours are from 1:30 -3:30pm at the HPP Activity Center**  
**Volunteers needed at 11:30am, please contact**  
**NWHPPJudi@gmail.com**

# WARNING Queensland Lonahorn Beetle



**DESCRIPTION from the HAWAII DEPARTMENT OF AGRICULTURE**  
**ADULTS**  
• 2 cm - 4.5 cm (3/4 in – 1 13/16 in)  
• Antennae over 1-2 times the length of its body  
• Dark brown  
• No patterns or spots on body  
• Two spines on sides of pronotum  
**LARVAE**  
• Legless  
• Cream-colored  
• can reach lengths of over 5.75 cm (~2 1/3 in)  
**IF FOUND Call HDOA 974-4146, Email: [HDOA.PPC@Hawaii.gov](mailto:HDOA.PPC@Hawaii.gov)**

**Sign up if you would like our Albizia Team to come and assess your property to see if we can come and treat Nonhazardous Albizia Trees on your property.**

# Albizia, Rapid Ohia Death & Fire Ant Workshops

by Judi Houle

The next **Albizia Tree & R.O.D. Workshop**

**Fire Ant Workshop: June 20th, at 9:am**

**Sponsored by Big Island Invasive Species Committee**

We would like to invite you to our next Albizia Control Work shops **3rd Saturday @ 9:am.**  
We meet at the HPPOA Activity Center Pavilion building in the library located on Makuu Dr. between 17th and 16th Ave. Starting at 9:am for about one hour, BIISC will teach us Safety and Milestone Treatment.  
Big Island Invasive Species Committee can answer your questions, and talk about safety concerns.  
Everything will be provided FREE by BIISC and HPP Albizia Control Committee !  
Please show our Community, and Politicians that supported this program, that you care. Our active participation in this Albizia Control Project could effect it's future funding, improve our Safety, and increase property values.  
**For program questions, please contact:**  
Judi Houle - (HPP Albizia Committee Chair) Cell#(808)895-3529  
email: [nwhppjudi@gmail.com](mailto:nwhppjudi@gmail.com)

If your neighbors have these dangerous trees on their property and they could be a threat to you, try to contact them and if you need help, we can help you. The State and County have new laws that can make them remove the trees or the State will do so and charge residents at a higher cost.

We have just started a new program to assist our HPP residents in treating “Non Hazardous locations” for FREE.  
\*(Non Hazardous locations means, they are not too close to any structures or power lines).

We have handouts on ways to contact your neighbors about this problem. Contact Neighborhood Watch via our email and we can send you the handouts . Our email is: [hppneighborhoodwatch@aol.com](mailto:hppneighborhoodwatch@aol.com)

# FIRE ANTS CONTROL PROGRAM

Note: Fire Ants... NW can't recommend one company over another. Here is a company that several residents used called KFA their number is 965-0209.  
**Contact info for Big Island Invasive Species Committee:**  
**Office: 933-3340 • HOT LINE: 961:3299 - [www.biisc.org](http://www.biisc.org)**

# Vice/Drug Tip Hotlines

**934-“VICE” (934-8423)**

Information pertaining to Districts of Puna, South Hilo, North Hilo and Hāmākua.

The 24-hour anonymous vice/drug tip hotline is a means for citizens to provide the Police of illicit drug use & distribution, as well as vice issues such as prostitution, gambling and other related crimes.

**Please call the police non emergency phone# 935-3311 for anything suspicious Program it into your phone.**

**Observe, Record, & Report • Non Emergency Police # 935-3311**



# Are You Hurricane Ready?

## TERMS TO KNOW

<b>Tropical Disturbance</b> A moving area of thunderstorms in the tropics that maintains its identity for 24 hours or more.	<b>Hurricane Watch</b> Issued whenever there is a good possibility of hurricane conditions of damaging winds, surf and flooding rains occurring <b>anytime within 48 hours</b> .
<b>Tropical Depression</b> Rotary circulation, sustained wind speed 38 miles per hour (33 knots) or less.	This is the time to take action and commence some preparations for your family, business and property.
<b>Tropical Storm</b> Distinct rotary circulation, sustained wind speed range of 39-73 miles per hour (34-63 knots).	<b>Hurricane Warning</b> Issued when there is a high probability of hurricane force winds occurring <b>anytime within 36 hours</b> .
<b>Hurricane</b> Pronounced rotary circulation, sustained wind speed of 74 miles per hour (64 knots) or more.	It is stressed that in the areas of the island covered by the warning, stay on the alert and complete all safety precautions once warnings are issued.
<b>Small Craft Advisory Statement</b> When a tropical cyclone threatens a coastal area, small craft operators are advised to remain in port or not to venture into the open sea.	<b>Flash Flood Watch</b> Means a flash flood is possible in the area; stay alert.
<b>Gale Warning</b> Issued when winds of 39-54 miles per hour (34-47 knots) are expected.	<b>Flash Flood Warning</b> Means a flash flood is imminent or occurring; take immediate action.
<b>Storm Warning</b> Issued when winds of 55-73 miles per hour (48-63 knots) are expected.	<b>Tornadoes</b> Spawned by hurricanes; sometimes produce severe damage and casualties.

## OUTSIDE

### Your Home / Business

- Take down canvas awnings or roll them up and lash them with sturdy rope or twine.
- Board up windows using lumber securely fastened.
- Check door locks to assure that they will not blow open.
- Check outdoor items that might blow away or be torn loose. Secure these items as best as possible or take them indoors. Chairs, flower pots, tools, heavy fruits from trees (Coconuts)
- Store chemicals, fertilizers, and other toxic chemicals in a safe section or secure area.

NOTE: You should complete your securement well before the hazards arrive.

### Recommended Evacuation Kit (GO BAG)

- Bedding ( Blankets, Sleeping Bags, etc.)
- Change of Clothing
- Special Medications & Dietary Foods
- Important Papers and Documents
- Infant Necessities (Formula ,Food, Diapers, etc.
- Personal Toilet Articles & Sanitary Items
- Nonperishable Snacks for 1-2 days
- Portable Radio, Flashlights & batteries
- Water- 2 qts per person per day for drinking
- PETS, Be sure to provide for your pets, they may not be allowed in the shelter.
- If you evacuate, Leave a note for those absent. share: time and date you left with phone #s an idea of where you plan on going.

## Hurricane/Tropical Storm PREPAREDNESS

The time to take action and commence preparations for your family, business, and property is before hurricane hazards affect your area.

### Develop a family and business emergency plan.

- Transportation readiness
- Evacuation routes/timing
- Securement of homes, businesses and property
- Care of pets and animals

### If you own a boat or small aircraft –

Take actions to safeguard your crafts and complete your actions before damaging surf or winds and flooding rains arrive. All coastal areas will be closed during the storm and roadways can be blocked by debris without warning.

### Prepare a home survival kit.

You can assume that if a hurricane or tropical storm strikes your area, all utilities will be affected. Be ready to cope with loss of water, electricity, gas, and telephone services.

### Prepare an evacuation kit.

Know your area. Prepare evacuation plans ahead of time, if your home, business, or other property may be endangered by high surf, flooding, or winds. Be prepared to evacuate before the danger arrives.

### Who should evacuate?

- Residents along low lying coastal areas. Use tsunami evacuation maps in your phone book as guidelines
- Residents along ridge lines exposed to strong winds.
- Residents in low lying areas subject to flooding
- Residents of wooden frame or other lightly-constructed buildings
- (Evacuation center locations and opening times will be announced on local Hawai'i Island radio stations.)

### Stay calm, stay alert, and stay informed.

Listen to official announcements by Hawai'i County Civil Defense and the National Weather Service.

## INSIDE

### Your Home / Business

- Tape glass windows on the inside with large Xs to reduce shattering. Close curtains and blinds for added protection. If boards or tape isn't available, secure blankets to the inside to lessen the hazard of flying glass.
- wedge sliding glass doors with a brace or broom handle to prevent them from being lifted out of the tracks or ripped loose by strong winds.
- Unplug all unnecessary appliances. Shut off gas valves.
- Turn refrigerators and freezers to the coldest setting. Do not open unless necessary. If you have room, freeze water in plastic bottles or zip lock bags to help keep other food cold if power goes out.
- If you are going to evacuate your premises shut off, power, gas and water at the main source.
- Package your valuables such as jewelry, titles, deeds, insurance papers, stocks, bonds, licenses, inventory of home and property (photos) for safekeeping in a water-proof container. Take these with you if you evacuate.

### We have added a few ideas from HPP NW

- Keep Cash ready & more than one credit card.
  - Photo copies of important doc. in case you use a safety deposit box and may not be able to access it for several days.
  - Paper list of all important contact info. Your phone may not be usable to contact family & insurance Co.
  - When hurricane warning is issued, keep all cars filled with gas and don't park under an large trees or in low areas that are prone to flooding.
  - Pets are family, keep their ID Chip documents, vet's info, extra leashes, long rope, food, pet carriers, & meds ready.
  - Keep a large tarp & rope ready, there are many uses.
  - Put spare car & power charges in your Go bag.
  - Put recent photos of loved ones and pets in your Go Bag in case you get separated.
  - Matches or lighter, candles & some basic camping tools.
- (We need to remember Puerto Rico's hurricane disaster and our own lava disaster)

