

The Conch

Published for the Owners and Residents of Hawaiian Paradise Park

Third Quarter

Fall 1997

President's Message

by Patrick Walsh

In the five months since I took office, I have seen and been a part of the future of this wonderful community. We live in the most exciting times. There are positive results from the labor of the volunteer Board of Directors and members of the community. We have reached the point at which the facts and truth about our community are proving to be the envy of the state. The Third Circuit Court called the attacks of an individual, "...failure to act in good faith..." and "...who filed pleading for improper purposes which harassed and caused delays and increased legal costs." As a result the filings were denied and dismissed. The court placed sanctions on him for his actions.

There are more important topics: *Master Plan, water line, Financial Management District, and Reorganizational Plan.* Some of these make the front page of the island paper on a regular basis. Why? Because it is news, good news for our community. Together as one organization, as one group, lot owner, resident, whatever, your interest in the community of Hawaiian Paradise Park, the future is in our hands.

(continued on page 10)

Conch Now to HPP Tenants

by Walt Bell

Sharp readers will have noticed some changes in the Spring issue of The Conch. The new masthead: *The Conch, Published for the Owners and Residents of Hawaiian Paradise Park* reflects the continuing move toward the Conch as the newsletter for the entire HPP community.

To further serve the entire community, starting with the Spring issue, the Conch is being mailed to all HPP residents, owners and tenants alike, with HCR 1, 2 and 3 postal boxes. That's why the owners living in the Park now receive the Conch as "HCR Customer." This adds almost 900 new Conch recipients, and as far as we are able, puts the Conch in the hands of the entire HPP community, residents and non-resident owners.

(continued on page 10)

Update from Master Receiver

by Bruce T. Yoshida Esq.

As reported in the last issue, *Third Circuit Court Judge Greg Nakamura* appointed *Bruce T. Yoshida* as *Temporary Master Receiver for Hawaiian Paradise Park Owners Association* on June 6, 1997. Mr. Yoshida is administering the operations of the Hui and the Road Maintenance Committee, and overseeing Coldwell Banker Day-Lum Properties and William Ronald Dolan, CPA.

The Temporary Master Receiver's Report and Recommendation has been submitted to Judge Nakamura. Mr. Yoshida is current entertaining suggestions and comments from the Hui Board

(continued on page 9)

Thanksgiving Day Dinner

Fall is in the air and frost is on the pumpkins. (Maybe somewhere else, but not here!) That means it's almost time for the *Annual Paradise Hui Hanalike Thanksgiving Day Dinner.* This is a time for warm fellowship, sharing, and good food and the PHH Activity Center is the place to be on Turkey Day. On November 27th, the Hui will provide the roast turkey, gravy, stuffing, mashed potatoes, cranberry sauce, dinner rolls, coffee, tea, pumpkin pie and even the whipped cream! All you have to provide is your own table service (paper and plastic or Grandma's good china, which ever you prefer), a generous, appropriate salad or vegetable dish to share, and beverage of your choice. The cost is

\$4.00 per person and \$1.00 for keikis 5 years and under. Social hour starts at 1:00 p.m. and dinner is served at about 2:00 p.m.

We ask that you make reservations and prepay at the administrative office by November 21st. No refunds will be given for cancellations and we cannot reserve tables in advance. To reserve your seating, come midmorning on Thanksgiving Day to select a table.

Events like this do not happen without the help of many volunteers. Help is needed with table set up, decorations, cooking the turkeys, carving, serving and clean up. If you can assist in any of these areas, please give *Denise Smith* a call at 982-5625 ♦

Community Action Committee

by Walter Moé

The Community Action Committee is at work on a number of projects. These are exciting for all of us in Hawaiian Paradise Park. Let me try to give you an update on the various activities.

Bulletin Board: We built the "Bulletin Board" by the entrance to the Activity Center, we cemented it in place, painted it, and dug the trench for electrical hook up. To turn on the lights, however, was not that easy. In May, we applied for a County electrical permit for a hundred dollar job. Four months later, the bureaucratic nightmare is over and we have received permission to turn on the lights.

(continued on page 11)

Calendar of Monthly Events

Board of Directors Meeting

2nd Wednesday - 7:00pm

Road Maintenance Meeting

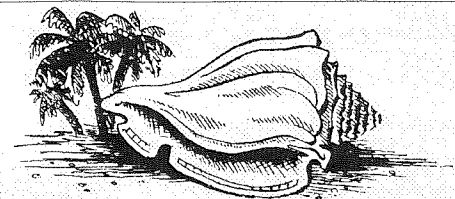
2nd Thursday - 7:00pm

Swap Meet

2nd Saturday - 6:30am

General Membership Meeting

3rd Sunday - 3:00pm



The Conch

HC 3 Box 11000, Keaau, Hawaii 96749
Tel. (808) 966-4500 Fax. (808) 982-5198

The Conch is published quarterly for the benefit of the owners and residents of Hawaiian Paradise Park.

It is the mission of The Conch to...

- INFORM** our readers of matters which affect our quality of life.
- INVITE** their participation in this process of communication, and
- INSPIRE** a new sense of community in Hawaiian Paradise Park.

The views expressed herein are those of individual contributors and do not reflect the opinions and policies of Paradise Hui Hanalike, its Board of Directors, Officers or members.

CONTRIBUTIONS: Submissions of community interest, typed and signed are welcome, and should be mailed or delivered to The Conch at the administrative office near 17th and Maku'u. Publication deadline for the next issue will be January 9th, articles and letters may be edited at the discretion of The Conch.

ADVERTISEMENTS: Direct inquires to Jane Buffington at 982-7811.

CHANGE OF ADDRESS: Notify the administrative office by mail, telephone or fax. Include the TMK or lot number of your property and your telephone number.

Christie Wolf, Conch Misses You!

More than anyone, Christie Wolf has shaped the look and character of the Conch. For the last four issues, and even before that, Christie has not only edited the copy, hounded the contributors, entered everything on the computer, designed and executed the layout, but she has also written a good share of the articles.

Christie is now taking a well deserved retirement from the Conch. And she is sorely missed! Thank you Christie, for your immense contribution to the Conch. We'll do our best to continue your high standards ♦

Help Wanted

The Conch has openings for volunteer writers, reporters, computer typists, photographers, and gophers who would enjoy being a part of our quarterly newsletter team. Call Walt Bell at 982-5417 ♦

On The Roads

By Nancy Cabral

As appointed by the Courts, Temporary Master Receiver, Bruce Yoshida and Coldwell Banker Day-Lum Properties are temporarily responsible for the day-to-day operations in Hawaiian Paradise Park. Since coming on board in June, we've received a large number of comments concerning the condition of the roads. In response to your comments, we're doing the following:

1. Using 2-1/2" cinders instead of the old 6" size, in an effort to "de-washboard" the roadbeds;
2. Soliciting updated prices for striping and reflectors on the paved roads, and
3. Investigating the best kind of signage for identifying dead-end roads.

At this writing, all the equipment is up and running, and the crew is being kept busy. We are trying to eliminate some of their other duties, so they can get back to doing what they do best - repairing the roads! We are evaluating each and every road, and the condition of the equipment, in arriving at a final master plan for maintaining the roads.

If you have specific concerns, please contact the business office at 966-4500 on weekdays from 9 a.m. to 12 noon, and 12:30 to 4 p.m. It is helpful, but not necessary, for you to leave your name and phone number. Please leave an accurate description of the location - a power pole number, a block/lot number, a tax map key number, etc ♦

PHH Library Free to the Community

by Tess Tinker

One of the best kept secrets of the Park is our library, located in the Activity Center and open to the community. Ours in an honor-system library. Visitors are welcome to take as many books as they like for as long as they like. Borrowers are asked to place returned books in the "return shelf" area so they may be inspected and shelved correctly.

The books are filed by category and then by author. Duplicate copies are put aside to be sold at the Swap Meet. The library has a good selection of fiction, self-help, travel, biography and a limited selection of children's reading.

All books have been donated to the library. Donations of paper back books in good condition are welcome. My able volunteers and I, keep the shelves organized and the books in good condition.

The library is usually open during scheduled activities at the Activity Center, if it is locked, a key may be obtained during office hours at the administrative office.

The library provides a good selection of free reading. If you haven't been by to see it yet, please come and *check us out* ♦

Paradise Hui Hanalike Membership Application

Please consider joining the Paradise Hui Hanalike, your community association. Membership in PHH is completely voluntary. Although many owners believe their road maintenance fee includes membership in PHH, it does not. Road maintenance fees are designated only for the maintenance of the 134 miles of roads in Hawaiian Paradise Park and associated expenses. PHH provides all of the administrative support to the Road Committee. PHH has a Board of Directors, elected only by the membership of PHH. This board supervises the administrative services that support the Road Committee as well as many long-term projects in Hawaiian Paradise Park.

Name _____

Address _____

City _____ State _____ Zip _____

Lot Location _____

Block _____ Lot# _____ TMK# _____

Please make checks to: Paradise Hui Hanalike • HC3 Box 11000 • Keaau, Hawaii 96749

Volunteer Fire Department

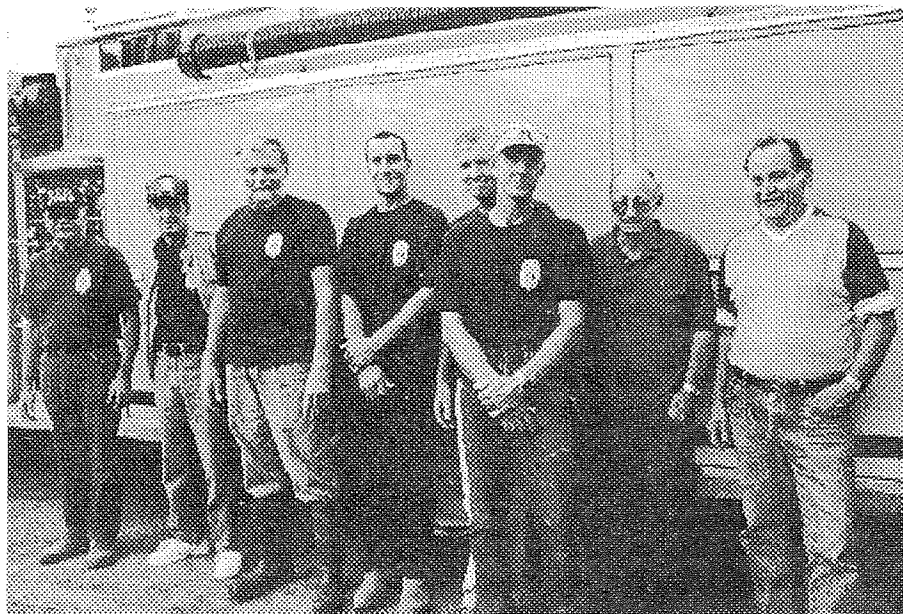
by Denise Smith

Seventeen years since its formation Hawaiian Paradise Park Volunteer Fire Department is as active as ever. The unsung heroes and heroines who volunteer to work alongside the County fire personnel are ever ready for the call for help.

There are at present 15 active volunteers, Wayne Babchuk, Francis Blas, Don Butcher, Mike McMillan, Kenneth Moonney, Mike Rushton, Frank Steffen, Kevin Walsh, Isreal Grenier, Mike Martins and Melissa Weber, with Doug Keown as volunteer Fire Chief. District 18, covers all of Paradise Park, Orchidland and Ainaloa subdivisions. The County provides each volunteer's bunker gear and voice pager, training and physical exams for new volunteers. But the time, energy, and devotion is pure volunteerism on the part of the men and woman of the Department.

So what does a volunteer fireperson do, you ask? According to Chief Keown, being ready and trained is a good part of the job. When a call for assistance comes from the Cental Fire Station in Hilo to the Paradise Park fire station at 21st and Paradise, the County fireperson responds and rolls to the location. The volunteers are dispatched via their pagers. Most carry scanners and hear the call from Central before receiving the pager call. Keown says that a volunteer is usually on the scene before the County fireperson arrives. Most of the volunteers carry their bunker gear with them in their vehicles so they are ready to go when they get the call. At a brush fire, they assess the situation while waiting for the fire truck and tanker to arrive. They determine if structures might be endangered, the direction the fire might spread, and advise Central dispatch. At a structure fire, they determine if there is life in possible danger, shut off propane tanks, gas and electrical lines

(continued on page 10)



Eight of our volunteers in front of the brand new fire engine.

(left to right: Albert Maldonado, Frank Steffen, Don Butcher, Matt Hoeflinger, Kevin Walch, Volunteer Fire Chief Doug Keown, Kenneth Moonney and Manuel Martinez)

News from Malamalama Waldorf School

by Jackie Benton Ching

Malamalama Waldorf School recently held a community day at both campuses, the Kinderhale, located on Paradise Drive and the main campus, located on 26th and Maku'u. Many families volunteered to help with yard work and cleaning. Our campuses look terrific.

We are currently planning *The Holiday Faire*, our gift to the community. Food, games, entertainment, holiday gifts and a special puppet show will be featured. You are cordially invited to attend December 13, 2:00 p.m. to 8:00 p.m. This is a wonderful opportunity to take a break from the hustle and bustle of the season and have family fun. A make and take room will be offered for children and adults to make simple Holiday crafts (a big hit last year.) We are also interested in craft vendors. There is a small fee for space. Interested crafters may call the school at 982-7701.

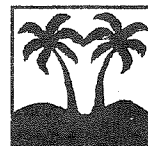
We will also be hosting a Scholastic Book Fair here in our campus library, December 1-6. Children's books, holiday books, and some adult books will be for sale. Books make great gifts and the proceeds go to benefit our campus library which, by the way, is open to the public. For more information about our book fair, our library, or any other aspect of Malamalama Waldorf School please call.

Malamalama welcomes David Lindbergh as a new member of our Board of Directors. He was appointed by the directors of Paradise Hui Hanalike to fill the Hui's vacant seat on Malamalama's Board. David is an active parent volunteer and has served on our Board in the past ♦



Malamalama Waldorf School
HCR3 Box 13031, Keaau, HI 96749
(808) 982-7701

Unique Curriculum Alternative School
in Hawaiian Paradise Park
Affordable Tuition
Limited Spaces Available
Preschool - 8th Grades



**Rozett's
Nursery**

Phone 982-5422

**WE WILL HAVE ALL SIZES OF
PREMIUM MAINLAND CUT
TREES THIS YEAR**

COME SEE US AT 28TH & KALOPI FOR ALL
YOUR HOLIDAY PLANT NEEDS



MICONIA ALERT !

by Walt Bell

As most of our Big Island readers should know, Miconia, a fast-growing weedy tree from South America is now invading Hawaii. This is the tree that has destroyed over 70% of the forest growth of Tahiti. Miconia is a threat because it shades out other plants in forests, pastures and farmland. It causes erosion by shading and killing ground cover plants. A single plant produces thousands of tiny seeds which spread quickly.

Miconia has recently been found and treated with herbicide at the following locations in Hawaiian Paradise Park: Off Pohaku Circle near Pohaku Place; between 27th and 28th, between Shower and Kaloli; 24th between Kaloli and Paradise; between 15th and 13, Pahoa side of Maku'u; and between 2nd and 3rd between Paradise and Maku'u; and near the corner of 2nd and Maku'u.

Be on the lookout for it. It is quite distinctive, large dark green leaves with purple undersides, and showy pink blossoms. If you think you've found Miconia, call the Hotline 961-3299. An expert will confirm your sighting and give further instructions ♦

Seniors of Paradise

by Audrey Eskelson

The Seniors of Paradise (*Na Kupuna O'Paradise*) have been busy "Making a Difference." At our October meeting, we brought enough supplies for the *Salvation Army* to fill their van. Also for *Make a Difference Day*, the ladies had been busy sewing lap robes and bibs, and knitting slippers and scarves which were presented to the *Hilo Extended Care Center* on October 25th. We plan to make this an on-going project.

Our December meeting will be a *Christmas Luncheon* December 1st, at the *Hilo Hawai'ian*, in the *Moku'ola Room* 1. Once again Eve Henderson has designed special entertainment, including the *Ladies of Pua Kea Hula Halau* and the debut performance of *The Kitchen Band*.

The January Luncheon meeting on January 5th will include the installation of Officers and Board members. The site had not been decided as of press time.

Come join us, the more the merrier! We meet once a month on the first Monday of the month at 9:30 a.m., followed by a potluck lunch, usually at the Activ-

ity Center. We also offer Hula, Art and Mah Jongg at the Activity Center, plus lots more in Kea'au. **Art Group:** Tuesdays at 10 a.m. Call George Brennan, 965-8902 **Mah Jongg:** Tuesdays at noon, Call Norma Mastenbrook, 966-4661 **Hula:** Thursdays at 9:30 a.m. Call Eve Henderson, 982-9534 ♦

Swap Meet Report

by Ken Flood

We apologize for the confusion and regret the inconveniences caused by the cancellation of the October Swap meet, the result of a booking SNAFU. We promise the 2nd Saturday of each month will always be Swap meet at the Hui Activity Center, 7:00 a.m. to 11:00 a.m.

The July, August and September Swap meets continued to be well attended by both buyers and vendors offering a wide variety of goods for sale. Starting November, Bay Clinic, in association with VISTA, the Federal domestic Peace Corps, will be at each Swap meet to offer free blood pressure screening.

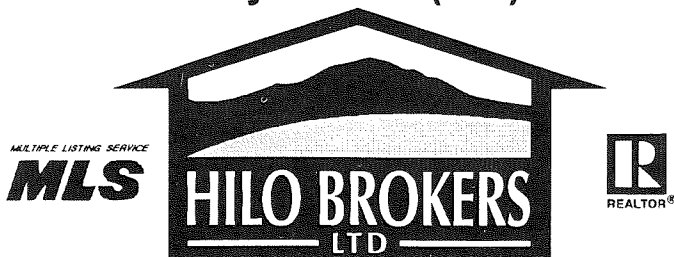
We'll see you at the next Swap meet! Plan on having breakfast there, served by Roger Evans ♦

Need to Sell or Buy Real Estate on the Big Island?

Hilo Brokers, Ltd. is an aggressive, well-established, progressive, high-tech, locally owned and reputable leader in the business of buying and selling property. We were the first real estate company on the Big Island with a Web Page, buying and selling property over the Internet before other Big Island realtors even knew the Internet existed. We are the cutting edge of Big Island real estate marketing. Come see me for your real estate needs. Visit our office and let me give you an Internet marketing demonstration. Let me show you the future . . .

Call me at 969-9400 or email me at lloyd@hilo-brokers.com
Visit our Web Page at: www.hilo-brokers.com

Lloyd Taira (RA)



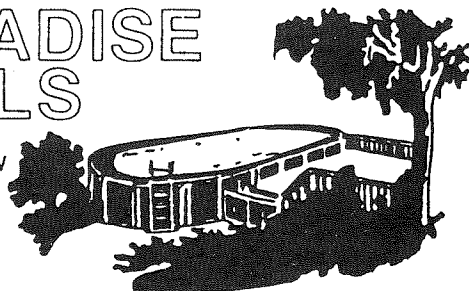
80 Pauahi Street, Suite 105 • Hilo, Hawaii 96720
808-969-9400 (phone) • 1-800-769-4456 (toll-free)
969-7900 (fax) • lloyd@hilo-brokers.com (email)



Peter Tam-Hoy
Instructor
Tai-Chi Chuan
Phone (808) 982-5403
HCR 2 Box 6259
Keaau, Hawai'i 96749

PARADISE POOLS

MIKE GREENLAW
HCR2-11020
KEAAU, HI. 96749



WATER CATCHMENT SPECIALISTS
LIC. # C-19018 TEL/FAX: 982-6701



TROJAN LUMBER

HILO LOCATION
7AM - 5:30PM M-F
7:30AM - 4:00PM SAT
FREE DELIVERY on most qualified orders Island Wide!

WAL MART	PRINCE KUMU PLAZA
HWY. 11	KEAAU →
ORCHID ISLE FORD	HOPACO
HOLOMUA ST.	←
★ TROJAN LUMBER	
MAKAALA ST.	

**** AFFORDABLE ****

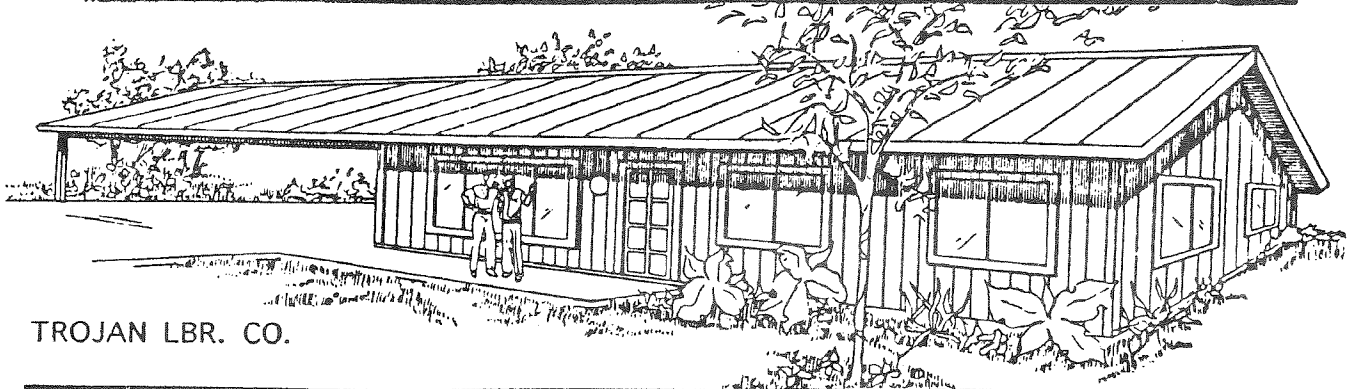
HOUSE PACKAGES

SHOP AT TROJAN LUMBER CO.
 FOR YOUR NEW HOME AND SAVE !!!
 WANT A CUSTOM HOME?
 COME IN AND VISIT OUR FRIENDLY
 STAFF AND WE'LL PUT YOU IN THE
 HOME OF YOUR DREAMS !!!

OTHER SERVICES OFFERED (AT NO CHARGE)

1) PLANNING	2) CONSULTING
3) ESTIMATING	4) FREE DELIVERY

199 MAKAALA • HILO  **935-9711**



TROJAN LBR. CO.

CHOOSE FROM 7-MODELS. STARTING AS LOW AS \$10,509.00
OR LET US DESIGN A HOME TO YOUR TASTE.

AT TROJAN THERE IS NO LIMIT TO WHAT WE CAN DO FOR YOU

WE KNOW TASTES VARY AND BUDGETS ARE SOMETIMES TIGHT SO WE DIVIDED OUR HOUSE PACKAGES INTO TWO MAJOR PARTS AS OUTLINED BELOW. YOU MAY PURCHASE ANY OR ALL OF THE FINAL OPTIONS TO COMPLETE THE BASIC SHELL.

BASIC SHELL
 *DOUBLE WALL CONSTRUCTION*ALL TREATED FRAMING MATERIALS*PRE-FAB TRUSSES*
 *5/8" T1-11 SIDING*NAILS-TIES-ANCHORS*PREPAINTED METAL ROOF*NAIL-ON SLIDING WINDOWS*
 *PRE-HUNG EXTERIOR DOORS*1X3 EXTERIOR TRIM*

FINISH OPTIONS
 *INTERIOR WALLS-DRYWALL*INTERIOR DOORS AND TRIM*FINISH PLUMBING FIXTURES*
 *ALL LIGHT FIXTURES-BULBS-SMOKE ALARMS*BATH HARDWARE

FOR MORE INFO PLEASE CALL (808)935-9711. AND WE'LL MAIL OUR BROCHURE TO YOU.



by Norma Bell

Congratulations to **Dee and Bob McNabb**, who celebrated their 50th wedding anniversary in October.

And more congratulations to **Bob McNabb** who has recently published a book of his poetry. It is titled *The Wanderings of a Wonderer* and is an ideal purchase for Christmas giving.

All the women want to cuddle with him, all the men want to shake his hand. He's a gentleman and a scholar. We Love You **George Budway**, so stay well!

Our sincerest condolences to **Lois Lee** and the family of **Paul Williams** who died October 16th. The *Marine Honor Guard* was at the graveside and gave Paul, a *21 Gun Salute*. Lois stayed composed, as the rest of us near jumped out of our chicken skin. It was a beautiful send-off to Paul.

A must see: *Playback Theatre*, 8:00 p.m., Friday, December 5th at the Akeb-

ono Theater in Pahoehoe. Don't miss it. You'll be in for a terrific surprise!

Did you know we have a Hollywood movie actress who just recently moved to the Park? Guess who? See our next wireless for the story.

What's the worst thing that can happen to a dancer? Ask T.T. how the sewing machine fell on her foot.

Did you see the picture of the miniature horses on the front page of the Tribune-Herald recently? The little beauty in front is *Lady* belonging to HPP's indomitable volunteer **Jane Buffington**. Jane, also a long time Hospice volunteer, has three other miniature horses, which she keeps in Pennsylvania.

The other horse is *Hot Stuff*, belonging to **Carol and Randy Flowers**, who with their son Nathan and daughter Amy have recently moved from Oahu to the Park. *Hot Stuff* joins a peaceable kingdom of dogs, cats, pot bellied pigs, rabbits, chickens, ducks and peafowl.

A second pay phone is now in service on Paradise Drive, by the fire station at 21st. A third is scheduled for Kaloi Drive.

And now for a *Coconut Quiz!* Do you

know what the following individuals are noted for? 1. *Frances Gumm*, 2. *Archibald Leach* and 3. *William Claude Dukenfield*? Send your answers to: *Coconut Wireless, c/o The Conch*. If you answer all three correctly you will win a **FREE subscription to the Conch!**

Did you see **Doreen Henderson's picture in the papers?** She won two First Prizes at the *Aloha Festival's Paniolo Hat Lei Contest* held in Waimea in October. Nice going Doreen!

Welcome to **Chuck and Nora Cartwright!** After visiting here for 12 years, they have retired and moved in September to HPP from *Durango, Colorado*. They will miss the skiing and mountain backpacking, but we hope not the cold winters.

Another welcome goes to **Les and Gloria Whiteley!** They moved here from *Tahiti*. Why would anyone want to move FROM *Tahiti*?

If you have news of our neighbors, achievements, and such, please drop a note to "Coconut Wireless c/o The Conch" at the administrative office. Be sure to include your name and phone number, in case we need to confirm details ♦

PUNA FEDERAL CREDIT UNION
SATISFYING MEMBERS THROUGHOUT
PUNA SINCE 1938.

SAVINGS & CHECKING ACCOUNTS.
CERTIFICATES OF DEPOSIT
LOANS- AUTO, PERSONAL, VISA CARDS
SUPER LOW LOAN RATES!
LOCATED RIGHT IN THE HEART OF KEAAU!

16-589 OLD VOLCANO ROAD
KEAAU, HAWAII 96749

PH: 808-966-9357
FAX: 808-966-8878

ALI'I SERVICES
Multi-Talented

ⒸARPENTRY, ⒸOUNTER-TOP
ⒸDRYWALL, ⒸPAINTING ⒸETC.

Price you can live with & Free Est.
Tom 966-6033

Ilima

Designed by *Anna Chan, M.A.*

HPM Home Designs offers affordable packaged homes to fit all budgets and lifestyle needs. Home owners receive assistance from our knowledgeable and friendly staff who coordinate plan modifications, permit processing, order processing, material deliveries, account adjustments and file maintenance; bonding services and department availability in all three locations (Hilo, Kona and Waimea).

1,230 Square Ft.
Includes 2-car Carport

Call **Kim Pacheco** at our Hilo Branch for more information at 935-4244.

HILO 935-0875	KONA 329-1634	WAIMEA 885-6036
-------------------------	-------------------------	---------------------------

HPM BUILDING SUPPLY

“Quarterly” “Quotes”

Always forgive your enemies - Nothing annoys them so much

Oscar Wilde

The good die young - because they see it's no use living if you've got to be good.

John Barrymore

God heals, and the Doctor takes the fee.

Benjamin Franklin

Keep a diary and one day it'll keep you.

Mae West

Grief Support Offered by Hospice

by Shelly Ross

The death of a loved one can be a painful and lonely experience for anyone, young or old. And, although each person deals with grief in their own unique way, sharing experiences, thoughts and feelings with others in the same situation can aid in the healing process.

Grief support groups at Hospice of Hilo provide on-going, emotional support

and information to those experiencing the loss of a loved one.

Facilitated by carefully trained staff and volunteers, the support group provides a safe, caring and supportive environment where participants may speak freely regarding their grief and loss issues.

Grief support groups are offered by Hospice of Hilo at no cost on Wednesdays, 9:00 to 10:30 a.m., and on Thursdays, 3:30 to 5:00 p.m., at Hilo Lagoon Centre, 101 Aupuni St., Suite 1014B. For more information call Shelly Ross at 969-1733 ♦

Support Our Swap Meet!

The *Paradise Park Swap Meet* is held from 7:00 am to 11:00 am on the second Saturday of each month at the *Paradise Park Activity Center*. You can rent a table for \$6.00 or an outside space for \$3.00. So clean out those closets and sell your treasures! Or, you can drop in just to shop, visit with your neighbors, and enjoy a breakfast cooked by Roger Evans ♦

PHH Activity Center

Daily Calendar of Events

Sunday

Religious Science Church ... 10am - 12noon
AA Meeting 5pm - 7pm

Monday

Tai Chi Classes 8:30am - 10:30am
..... 7pm - 8:30pm

Tuesday

Seniors Art Group 10am - 12noon
Mah Jong 12noon - 3pm
Youth Service Center 3pm - 6pm

Wednesday

Tai Chi Classes 8:30am - 10:30am
..... 7pm - 8:30pm

Thursday

Seniors Hula 9am
Hiccup Circus 3pm - 5pm

Friday

Tai Chi Classes 8:30am - 10:30am

Saturday

2nd Saturday Each Month Only!
Swap Meet
Roger Evans' Breakfast 7am - 11am

Kavana Homes, Inc.

3bedrm/1.5ba/2 car carport Homes
from: \$77,000.

Price includes: site prep, catchment system, cesspool, all labor, materials, stamps & permits,
808-935-4243 * 800-735-4243

1300 Model located at Hilo Airport Intersection
Wayne's cell 936-4181 * e-mail: kavana@interpac.net



HOSPICE of HILO
CELEBRATING LIFE DAY BY DAY

BRENDA HO, RN, BSN
Executive Director

HILO LAGOON CENTRE
101 AUPUNI STREET, PH 1014-B
HILO, HAWAII 96720
TELEPHONE: (808) 969-1733
FACSIMILE: (808) 969-4863

This advertising space donated by Jane Buffington

Pahoa Cash & Carry

965-8216~PAHOA GOVERNMENT ROAD~965-8216

ICE COLD BEER~GROCERIES

FRESH MEAT & VEGETABLES~PET FOOD~SODAS

FISHING SUPPLIES~LIQUOR~TOBACCO

AND VISIT OUR DELI~HOT SPECIALS DAILY

RIBS, CHICKEN, SALADS, SANDWICHES & MORE

FREE DELIVERY WITH MINIMUM PURCHASE

WE ACCEPT VISA, MASTERCARD, FOOD STAMPS & WIC

TELEPHONE
(808) 961-5020

T & C REALTY

PROPERTY MANAGEMENT • RESIDENTIAL

AND LAND SALES

ANTOINETTE M. "TONI" DEMELLO
PRINCIPAL BROKER

640 PILANI ST.
HILO, HI 96720

Litter Committee

by Denise Smith

The September litter pick up coincided with the international "Catch the Drift and Bag It" project. Even though our concentration was on the ocean front areas, the 8 people who turned out managed to pick up on the upper part of Kaloli and Paradise also. Mahalo nui to Kyle Golden, Marie Smith, Judy Adams, Susan James, Jim Erviti, Power and Rosetta Sogo and Roger Evans for spending your Saturday morning helping to keep Paradise Park litter free.

The next pick up will be on November 22nd, followed by the last Saturday of odd numbered months. We meet at the mailbox cluster in front of the entrance to the administrative services office near 17th and Maku'u at 8:00 A.M. come rain or come shine. Chef Denise will have continental breakfast available and Sonja will have her supply of super huge litter bags and street assignments ready. We hope to see all of the regulars there and welcome newcomers, too.

If you're interested in participating and want more information, call Denise Smith at 982-5625. We're looking for a new chair-



HPP members of Puuwai Opio after their stunning upset win at The State Senior Softball League tournament in Honolulu
(left to right: Larry Pirtle, Jerry Peterson and Gary Jung)

person for this activity. If you may be interested, please contact the administrative office at 966-4500 and leave a message for President Patrick Walsh ♦

Senior Softball

by Larry Pirtle

Bud Anderson, Gary Jung and Larry Pirtle,

all from Hawaiian Paradise Park, are members of the *The Senior Softball League* team *Puuwai Opio* (Young at heart), one of eight Big Island teams that compete in the annual state tournament.

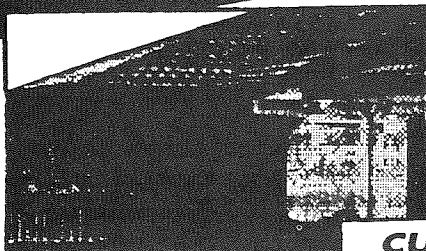
Puuwai Opio had a very bad season this year, with only one win. At the Big Island Tournament we did better, winning two games, enough to qualify for the "B"



PIERSON BUILDING SUPPLIES

**Large stock of
Viking vinyl windows
& patio doors.**

Vytek vinyl sidings (10 colors in stock • horizontal & vertical)
Raised Panel Steel & Wood Doors
Lumber / Plywood / Roofing



**WE SHIP TO ANY
"PORT IN THE PACIFIC"**

**CUSTOM
HOME
PACKAGES**

SHIPMAN INDUSTRIAL PARK, KEAAU PH.: (808) 966-7458 FAX: (808) 966-6821

HOW MUCH IS MY PROPERTY WORTH?

Ask Ken! Living and working in HPP since 1988. Free value estimate.

NET REALTY

Kenneth H. Flood, Broker

'All the latest in Modern Services:

808-982-7716 phone and FAX

E-Mail: hirealty@gte.net

"Get into the NET"

division. There are four divisions: "AA", "A", "B" and "C."

As we went into the State Tournament in August at Hickam Fields on Oahu, it looked as though we were over our heads in the "B" division. We managed to make it to the playoff game for fifth place, out of 8 teams. The excitement came in the bottom of the ninth inning, down by two runs with tow outs and two men on base at 1st and 3rd. Gary came to bat, and with a mighty swing, hit a line drive down the 3rd base line into left field for a home run and the winning run for 5th place in the State Tournament. What a finish! ♦

Pahoa High School Hoolaulea

by Walt Bell

The Pahoa High School PTSA is once

again kicking off the holidays with its *Christmas Parade and Hoolaulea* on Saturday, December 6th. It all starts with the parade through Pahoa's main street, 9-10 a.m. ending at the High School, where the festivities will continue until 4:00 p.m. Entertainment will feature name professional musical groups. There will be food, arts, crafts and Hawaiian for sale.

From 9:00 a.m. to 1:00 p.m. at the High School, the Pahoa Public and School Library will hold a Book, Bake and Plant sale in conjunction with the Hoolaulea. Proceeds will benefit the library.

For further information, call Bob Williams at the High School at 965-2150, or Maille Williams at the Library 965-8574 ♦

Attention

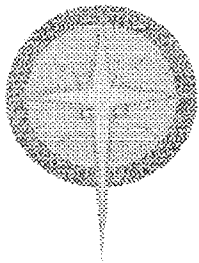
HCR 1, 2, & 3

Boxholders

After January 1, 1998, all mail not properly addressed will be returned to sender. Either HC or HCR is proper. Here's an example of a proper address:

**HC (or HCR) 2 Box 12345
Keaau, HI 96749**

If you haven't been using this form, be sure to notify your correspondents, so you will continue to receive your mail ♦



"And when they saw the star, they rejoiced exceedingly with great joy." Matthew 2:10

Join us for Christmas Eve Services - 7 pm at the Hui Pot Luck desserts following

First Church of Religious Science, East Hawai'i
.....a Center for Spiritual Growth

**CHEVROLET
PONTIAC
GMC
BUICK
Cadillac
Geo
OLDSMOBILE**

Randy Hayes
Product Specialist

1177 Kilauea Ave. • Hilo • (808) 961-5222 FX 935-0951

HAWAII MOTORS
seven dealerships in one



(808) 935-0399 BUSINESS
(808) 961-2459 FAX
(808) 959-9098 RESIDENCE

ELLEN F. AOKI, GRI
REALTOR®

**COLDWELL BANKER
DAY-LUM PROPERTIES**
REAL ESTATE SALES &
MANAGEMENT
2 KAMEHAMEHA AVENUE
HILO, HI 96720

An Independently Owned and Operated Member of Coldwell Banker Residential Affiliates, Inc.

PARADISE VACATION RENTALS

ENJOY RURAL HAWAII' I.....
Fully equipped private cottage on beautiful country estate in HPP

SWIMMING POOL
TENNIS COURT



1-800-555-8764 982-6701



MARY R. KIM
REALTOR®

MULTIPLE LISTING SERVICE
MLS®

Mary Kim Real Estate



P.O. Box 1775
Hilo, Hawaii 96721-1775

(808) 966-6066



WISH Sports Cards Plus

STOP IN
TODAY
PHONE:
969-7644

**IS NOW OPEN FOR BUSINESS IN
OUR NEW LOCATION AT THE:
"MAMO MART - UNIT D"**

176 Mamo Street • Hilo

Hours: Mon-Fri 10 AM-5 PM • Sat 10 AM-4 M • Closed Sun.

(Fire Department - cont. from pg. 3)

and when the fire truck arrives, assist putting out the fire.

When not responding to fires, they are in continuous training. They meet once a month at our fire station for sessions with Eddie Wong, the County training officer. Chief Keown and Kevin Walsh are both certified CPR instructors and they periodically recertify the volunteers' CPR status. They all help keep the equipment in good working condition.

The station is proud of its brand new, "right off the showroom floor" fire engine. The County purchased it for \$260,000 using HUD funds and it was delivered about one year ago. The old engine was given to the Hawaiian Beaches Volunteer fire department and is still in service. We also have a five year old 1200 gallon tanker truck.

The big new engine cannot negotiate many of the narrower driveways and additional hoses must be added to reach structures back on the lots. If you are planning to build, take fire fighting accessibility into consideration when determining your driveway and the placement of your catchment tank as a source for drafting water. Fire personnel at the fire station can assist you with details.

The HPP fire station has been manned by a County fireperson 24 hours a day, seven days a week since the completion of the living quarters about two years ago. They respond to medical emergencies as well as fires, however, the volunteers only respond to fire calls. In the first year of operation as a full time County fire station, the fire engine rolled to over 400 fire or medical calls. Our Volunteer Fire Department is certainly one to be proud of, and all the residents of Hawaiian Paradise Park are very grateful to have such a dedicated group of volunteers looking out for the health and safety of our community ♦



Chiropactic
Fitness & Fencing

No Fault, Work Comp, Most Ins.

Rehab, Physiotherapy, Nutrition
Turn Your Pain to Strength!

Dr. Karl Zauder DC, BS, 961-6989

Across from Subway Downtown Hilo; 183 Keawe

(Presidents Message - cont. from pg. 1)

I urge you to consider the next few years as the most important time in our history. When you wake up in the year 2000, will the Hawaiian Paradise Park community be breaking new ground for all the great aspects of a modern community: schools, shops, wider and safer roads, police and fire stations, parks and community activities for all ages? That my neighbors and friends is up to all of us, the Community of Hawaiian Paradise Park.

The Board of Directors are your hard working dedicated group of volunteers. The results of their labor is benefiting everyone. You can be proud of the past 25 years. You can also be proud of being part of the greatest community in the world, the Community of Hawaiian Paradise Park!

Again, thank you for your continued support of the Board of Directors. I promise to maintain the same steadfast optimism for our community in the next half of my term. God Bless you all and may you have a safe and happy holiday season!

(Patrick Walsh can be reached at the Paradise Park Office, or email him at patrick@interpac.net) ♦

Help Wanted

The Conch has openings for volunteer writers, reporters, computer typists, photographers, and gophers who would enjoy being a part of our quarterly newsletter team. Call Walt Bell at 982-5417 ♦



(Tenants - cont. from pg. 1)

On page 2 of this issue you will notice the Mission Statement of the Conch: to Inform, Invite and Inspire. This statement was composed almost a year ago by Christie Wolf, and somehow was never before printed. This is a good time to display our Mission Statement. We at the Conch will do our best to fulfill this mission.

Our readers comments are always welcome. Drop a note to "The Conch" at the administrative office. Let us know how the Conch can best Inform, Invite and Inspire you ♦

SUPPORT OUR ADVERTISERS

Don't forget to patronize the local businesses whose ads help to bring The Conch to you. And remember to tell them you saw their ad in The Conch ♦

Lets Put On Our Own Show!

There's a lot of talent in Hawaiian Paradise Park - singers, musicians, dancers, actors, comedians - more than enough for an evening variety show. So, how about it? Let's put on our own show!

If you have a talent, and would like to be a part of a show at the Activity Center, drop a note to "Variety Show c/o The Conch" at the administrative office. Give your name, phone number and a brief description of your talent or act. Our Impresario will be in touch with you ♦

Dolan, Silva & Associates, CPAs, Inc.

An Accountancy Corporation

Creative Solutions to Financial Problems

Ron Dolan, CPA

16A Railroad Avenue
Hilo, Hawaii 96720
(808) 935-5433
Fax: (808) 935-5434
email: shogun@gte.net

George Kalani Silva, CPA

544 Ohohia Street, Ste. 5
Honolulu, Hawaii 96819
(808) 839-5544
Fax: (808) 839-5506
email: atrb@gte.net

- Audit, Review & Compilation Services • Payroll Services •
- Bookkeeping • Contractor's F/S • Tax Prep (Individual, Corporate, Trust & Estates, etc...) • Tax Planning •
- Business Planning • Computer System & Accounting Software Setup (specializing in RealWorld & QuickBooks) •

(Update - cont. from pg.1)

of Directors and members of the Road Maintenance Committee for possible inclusion in his final recommendations.

Billings have been sent out to delinquent accounts, and the staff at the administrative office is working with owners on an individual basis to bring their accounts current. Please contact the administrative office at 966-4500, if you have questions or concerns. The office is open weekdays from 9 a.m. - 12 noon and 12:30 - 4 p.m. Failure to bring accounts current will result in collection as ordered by the court ♦

(Action Committee - cont. from pg.1)

Water Line: At present, it is our understanding the County will proceed with the construction of a twelve inch water main from Highway 130, down Paradise Drive to the Fire Station at 21st, with a hydrant at each block, with the following provisions:

1. No water service laterals will be permitted off the 12 inch main water line along Paradise Drive.
2. Water service laterals will be allowed only off the 8 inch water line extensions from the 12 inch main at each side street.
3. Those desiring water service may arrange extension of the water service 8 inch line to the nearest point of their property from the 12 inch main water line. Necessary easements for water line extensions must be granted to the Department of Water Supply according to its requirements. Costs for the installation of lateral water line extensions are the responsibility of property owners desiring county water.

HPP Community Master Plan: The master plan is moving through the preliminary County review process. The Planning Department conducted a community input workshop at the Activity Center attended by approximately 20-25 members of the community. The Planning Department received written and oral testimonies. The community participated in a spirited and friendly manner, especially by our Councilman Al Smith, indicating overwhelming positive approval. September 26, 1997, the Planning Commission conducted an on-site inspection through Hawaiian Paradise Park stopping at all important sites indicated in the plan. That afternoon the five Planning Commissioners continued a public hearing at the Kea'au Community Center and approved the plan unanimously, with the applause of the audience.

We have been cautioned by the Plan-

ning Commissioner and by Deputy Planning Director Russell Kokobun that the final implementation of the Master Plan into the County General Plan may take a number of years and may not happen in our lifetime. To short circuit this glacial timetable, we have formed within the Community Action Committee a permanent sub-committee for the express purpose of guiding and monitoring the master plan through the labyrinth of County and State agency requirements. The members of this committee are Denise Smith, John Luchau, Gary Jung and myself.

Please be involved, call 966-4500. Your Community needs you.

The 31 Acre Park: The location of the proposed park is between Paradise and Maku'u Drives, between 16th and 19th. The Community Action Committee has formed a park sub-committee made up of the following members; John Luchau, Larry Pirtle, Frank Carlson and myself. We need more members on this committee. This is a wonderful and rewarding activity. Please contact us by calling 966-4500.

HPP Financial Management Improvement District: The County of Hawaii has approximately 48 non-conforming private sub-standard subdivisions with no or limited rights to County services. Hawaiian Paradise Park is one of them. At the invitation of the County Mayor, Stephen Yamashiro, I was asked to present a proposal of how we may address these problems. A citizen work committee was formed which included HPP residents; Jim Erviti, Gary Jung, John Luchau and myself. The committee's task was to develop a plan that could be eventually applied to all sub-standard subdivisions. The committee developed the following formula:

1. Establish the amount of property taxes a sub-standard subdivision contributes to the County.
2. Deduct the service costs the County provides to the sub-standard subdivision (Police, Fire, Solid Waste removal, Tax Administration, and maybe others.)
3. The balance becomes the amount to be funded to the community based management of the sub-standard subdivision.

At the time of this writing, a resolution is before the County Council requesting the support for the formulation of a bill that would create the Hawaiian Paradise Park Financial Management Improvement District. 5th District Councilman, Al Smith and 6th District Councilman, John Santangelo have been asked to co-introduce this

resolution. They have enthusiastically agreed. Mayor Yamashiro is strongly supporting the creation of a special district which would create the mechanism for community based management of resources.

We will bring you more in the next issue of the Conch. For detailed information on this important activity, call Walter Moé at 982-6037 ♦

Adopt a P.I.G., Personal Interest Group

by Dee McNabb

Is there something you are interested in and would like to share? A special hobby, camcorders, genealogy, or even drama? If you would like to know others who share your interest, consider forming a P.I.G., *Personal Interest Group*.

We'll be happy to include your P.I.G. in the next Adopt a P.I.G. column in the Conch. Drop a note to "P.I.G., c/o The Conch" at the administrative office. Give us your name, a brief description of your interest, and your phone number. We'll print it, and after that it's up to you and those who reply to organize yourselves and proceed.

In the past groups have been formed to pursue such diverse interests as gardening, creative writing, bridge and weaving. Here are some people with special interests to promote.

Doll Collectors Club: Park residents interested in dolls, teddy bears and doll houses, either designing, collecting, building or just admiring, are invited to meet with the Doll Collectors Club of East Hawaii, at the Kea'au Recreation Center on the third Saturday of each month at noon. The Club is currently preparing for a Holiday Doll and Toy Show at the Wailoa Center in Hilo from November 15th to December 27th. Further information is available from Alice Kennedy at 982-7759 or Joan Warkentin at 982-6878.

Choral Group: Our superb operatic tenor and voice teacher, Richard Von Der Bloeman would like to start a Choral group with an eye to performing at the Activity Center and perhaps elsewhere. Richard, a former student at La Scala and the Metropolitan, and a college music teacher, makes singing easy and fun. He is also accepting individual voice students. Singers wanting to join in starting a chorus, write to R. Van, HC 3, Box 1108, Kea'au. Give your telephone number and he will get in touch with you ♦